

SCHMOOZEMAVENSCHTICK
SCHMALTZCHUTZPAH
SHLEP OI VEY! BAGEL
KUGEL BLINTZ

“Mameloshn offers a global perspective, not just a Melbourne one”
– *The Australian*

“Deeply moving, historically coherent and brilliantly presented, this exhibition is of lasting importance and significance”

– Victorian Royal Historical Society

“Tucked away in St Kilda, the Jewish Museum of Australia tells the fascinating story of how a generation influenced Melbourne life”
– *Time Out Melbourne*

Say Farewell to *Mameloshn* – How Yiddish made a home in Melbourne

Our award-winning exhibition, *Mameloshn – How Yiddish made a home in Melbourne*, is coming to an end after a wonderful and exciting season. With nearly 10,000 visitors including tourists, adult and school groups through its doors, *Mameloshn* is only open for another 6 weeks.

We've added new content to the website, so why not log on and learn some Yiddish phrases, read about Yiddish public speaking after World War Two or learn the truth about Bono Weiner.

Don't be a *shmendrick*, come and bid farewell to *Mameloshn* before Sunday 11 March.

Check our website for further information.



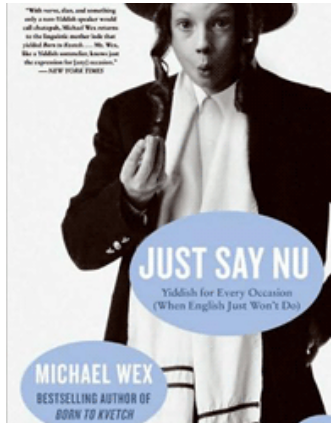
Tuesday–Thursday
10am–4pm
Sunday 10am–5pm

26 Alma Road
PO BOX 117
St Kilda, Victoria, 3182

T +61 3 8534 3600
F +61 3 9534 0844

www.jewishmuseum.com.au
info@jewishmuseum.com.au

News



What's Yiddish in the Shop?



Just Say Nu by Michael Wex

What do you do in those moments when no English word can express the extent of your feelings? You turn to Yiddish. *New York Times* bestselling author Michael Wex (*Born to Kvetch*) provides a collection of Yiddish words and phrases that instantly convey meaning far better than English could ever hope to. As Wex explains in the introduction, "[This book] is designed to help you transform your experience of the world by making Yiddish a part of your daily life."

So whether you're having a *shmooze* or a *shreien*, this book will show you the Yiddish way to do it!

Available now in the Museum Shop.

Open Monday 12:30–3:30pm, Tuesday–Thursday 10am–4pm and Sunday 10am–5pm



2012 SCHOOLS EDUCATION

Curriculum-based tours

As part of the new strategic plan the Museum is committed to delivering a range of educational and professional development programs for school students and teachers that target the national and Jewish studies curricula for students from Prep to Year 12. The Museum has a range of participatory tour packages for educators to choose from; *Model Passover Feast*, *Festival of the Lights Experience*, *Synagogue Visits*, *Sabbath Ceremonies*, *In the Basket*, *Celebrations and Where We Came From* and many more.

Book your 2012 school visit now or check the schools education pages on our website for more details.



2012 Short Courses

Summer – Series One

The 2011 adult education program delivered a rich and varied schedule to full classes at the Museum, tackling a wide variety of issues and themes confronting Jews and Judaism.

After this success the Jewish Museum of Australia is thrilled to announce that the 2012 short-course program is now confirmed. On board again in 2012 are lecturers Paul Forgasz and Ittay Flescher, who will run popular, sold-out courses that featured last year alongside new lecture topics and courses for those who want to return for a new year of learning. Please see the website for details.

2012 courses starting 6 February include: "Jews in the Modern World"; "Jewish identity: Homeland and Exile through the writings of Halevi, Bialik and Amichai" run by Carmela Levy Stokes and Ittay Flescher's multimedia course: "Israeli Society through Song", a challenging, searing and honest look at modern Israel, will be repeated due to popular demand.

More courses will be announced soon.

For details and enrolment see our website. No prerequisites and all welcome.



Current Exhibitions – Final Weeks!



The Babel Project

Until Sunday 11 March 2012
Gross Gallery

Inspired by the famous biblical story of the unfinished Tower of Babel, the Jewish Museum of Australia and its partner organisations present a multicultural arts program and exhibition, **The Babel Project**. Photographic artist Georgia Metaxas worked with 36 participants from a rich variety of cultural backgrounds and from the four compass points of Melbourne, who were invited to explore their commonalities through photography. The result is a powerful multimedia, soundscape installation that audiences can watch, listen to and experience.

After being exhibited at The Substation, Hume Global Learning Centre and Cardinia Cultural Centre, **The Babel Project** is now open for viewing in the Gross Gallery at the Jewish Museum.



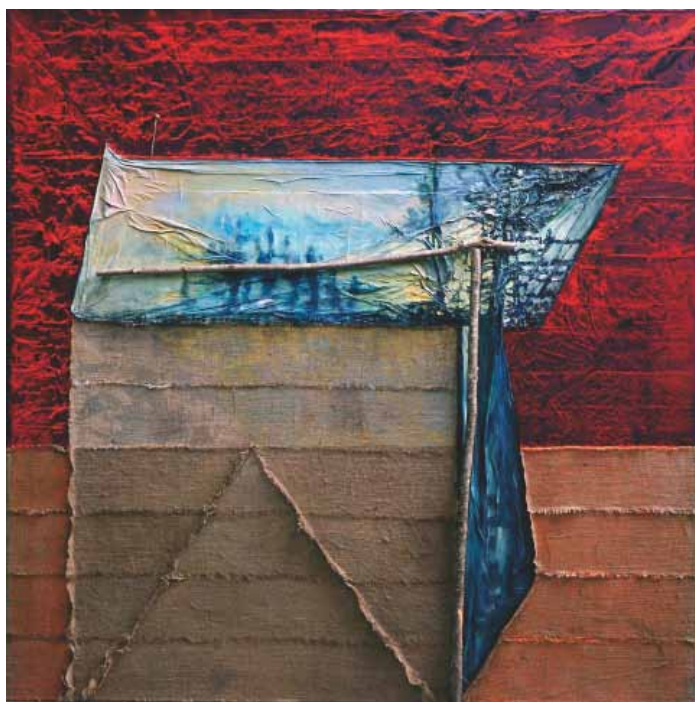
Mameloshn – How Yiddish made a home in Melbourne

Until Sunday 11 March 2012
Loti Smorgon Gallery

Curated by Anna Epstein in consultation with a dynamic Yiddish committee including writer Arnold Zable, historian Andrew Markus and Freydi Mrocki. **Mameloshn – How Yiddish made a home in Melbourne** documents the journey of Eastern European Jews who came to Melbourne to recreate their lives. With over 50 per cent of the exhibition curated from the Museum's collection, **Mameloshn** showcases the complexities, the controversy, the theatre, music and politics of the Melbourne Yiddish community, and the lasting contribution of a language and culture that has been woven into what is now multicultural Melbourne. A story of migration and integration, **Mameloshn** is at once a universal and distinct social history tale.

Check our website for more *yiddishkeit* online.

Upcoming Exhibitions



Marc Lopez Bernal, 4 – T – DALETH: *Radix porta*, mixed media, 2003.
Reproduced courtesy of the artist.

Aleph Bet

The poetry & artistry of the Hebrew alphabet: Works by Marc Lopez Bernal Loti Smorgon Gallery

Playing with the Hebrew alphabet Gross Gallery

April 2012

Aleph Bet is two linked exhibitions, each exploring different aspects of the ancient Judaic Hebrew alphabet. The meaning and beauty of the letters will be uncovered in **The poetry & artistry of the Hebrew alphabet** on display in the Loti Smorgon Gallery and **Playing with the Hebrew alphabet**, in the Gross Gallery will be entirely dedicated to children.

The poetry & artistry of the Hebrew alphabet is the full suite of 23 letters of the Hebrew alphabet presented through large-scale, mixed-media paintings by French artist Marc Lopez Bernal. Accompanying this exhibition will be alternative and creative workshops and programs involving Kabbalistic and poetic interpretations of spirituality and language.

Curated by Jess Rynderman, **Playing with the Hebrew alphabet** presents more than 23 gorgeous and engaging objects from the Museum's collection that each relate to a letter of the *aleph bet*. Developed specifically so that children and families can play, learn and explore language and objects, this is a not-to-be-missed exhibition for kids and will be accompanied by a range of activities and programs for children.

Check our website for more details soon.

Upcoming Programs

Museum Walks

St Kilda
Sunday 5 February



To coincide with *Mameloshn – How Yiddish made a home in Melbourne*, the St Kilda Museum walk traces the history of Yiddish St Kilda, where Sunday trading began in Melbourne. After Carlton, St Kilda became the home of many Jewish people in Melbourne and it was here that many Jewish migrants gathered on a Sunday to shop, socialise and discuss politics. Join us as part of **St Kilda Festival** and find out why Jewish families loved this beachside suburb now infused with a European sensibility. You'll visit Linden Art Gallery; St Kilda Town Hall; Christ's Church Parish Hall; Luna Park; the Palais Theatre and Acland Street with its wonderful cake shops.

Where: Meet at St Kilda Town hall (under the portico)
Time: 10:15am for a 10:30am start (Approximately 2 hours)
Cost: \$25/\$20 members/concession
Bookings essential: 8534 3600

For your comfort, we suggest you bring an umbrella, sunscreen, water and wear comfortable walking shoes.

The Family – A Panel Discussion

Inspired by SBS TV Series *The Family*
Sunday 26 February, 7:30pm



Following the screening of the new SBS TV series *The Family*, the Jewish Museum of Australia is hosting **The Family – A Panel Discussion**, exploring key themes raised in the series including cultural maintenance through language, inter-generational relationships, and the challenges commonly faced by second-generation migrants. These issues are also relevant to two of the Museum's current temporary exhibitions, *Mameloshn – How Yiddish made a home in Melbourne* and *The Babel Project*.

Miriam Faine and Maria Gindidis, lecturers at Monash University, will provide theoretical and socio-linguistic perspectives to these fascinating questions. Miriam and Maria will then interview two families, each with three generations present, one of Greek heritage and the other from a Yiddish-speaking background, for insight into their lives as they tell their unique stories.

SBS TV series *The Family* is a new eight-part documentary that takes viewers on a fascinating journey into the life of one ordinary Australian family. The Cardamone family allowed 35 remote-controlled cameras to follow their every move, day and night, for three months. The result is a no-holds-barred view of the dynamics and universal themes of family life. *The Family* premieres 8:30pm Thursdays from 24 November on SBS ONE.

Time: 7:30pm
Venue: Jewish Museum of Australia
Cost: \$15/\$10 Museum members
Bookings essential: 8534 3600



Museum Walks

The Leon Haskin Schmatte Business Walk
Sunday 4 March



As part of L'Oréal Melbourne Fashion Festival's cultural program, and coinciding with the Jewish Museum of Australia's temporary exhibition, *Mameloshn – How Yiddish made a home in Melbourne*, the Jewish Museum presents The Schmatte Walk. Relive the halcyon days of last century when Flinders Lane was the epicentre of the Australian fashion industry. Walk with Marie Hirsh, long-time Museum's guide, as she brings to life the buildings, businesses, characters and anecdotes of the 'Lane' and the *schmatte* business. Heritage architect Chris Smith, will accompany Marie, uncovering the fascinating history and architectural significance of some of the buildings that housed this thriving industry.

Where: Spring Street and Flinders Lane, Melbourne
Time: 10:15am for a 10:30am start (approximately 2 hours)
Cost: \$25/\$20 members/concession
Bookings essential: 8534 3600

For your comfort, we suggest you bring an umbrella, sunscreen, water and wear comfortable walking shoes.

St Kilda Festival

Open Day
Sunday 12 February, 10 – 5pm

As usual, the Museum will be involved in the glory that is the **St Kilda Festival** and will open its doors to the crowds on Sunday 12 February all day for FREE. St Kilda Festival is an inclusive and free celebration of summer making the most of St Kilda's stunning foreshore and featuring the cream of Australia's musical talent. It is also one of Australia's best-known and most-loved events and the Jewish story is a significant part of the history and social narrative that it celebrates. The Museum is a hop, skip and a jump from the thick of the action along the water. So there are plenty of reasons to come and check out the Museum's current exhibitions during the last four weeks of the exhibitions' season.

On tram 67 you will find us near the corner of St Kilda Road and Alma Road.

It's summer, you're in St Kilda, it's free and it's your city, get to know the culture, the history and the people this St Kilda Festival! Check website for more details.

